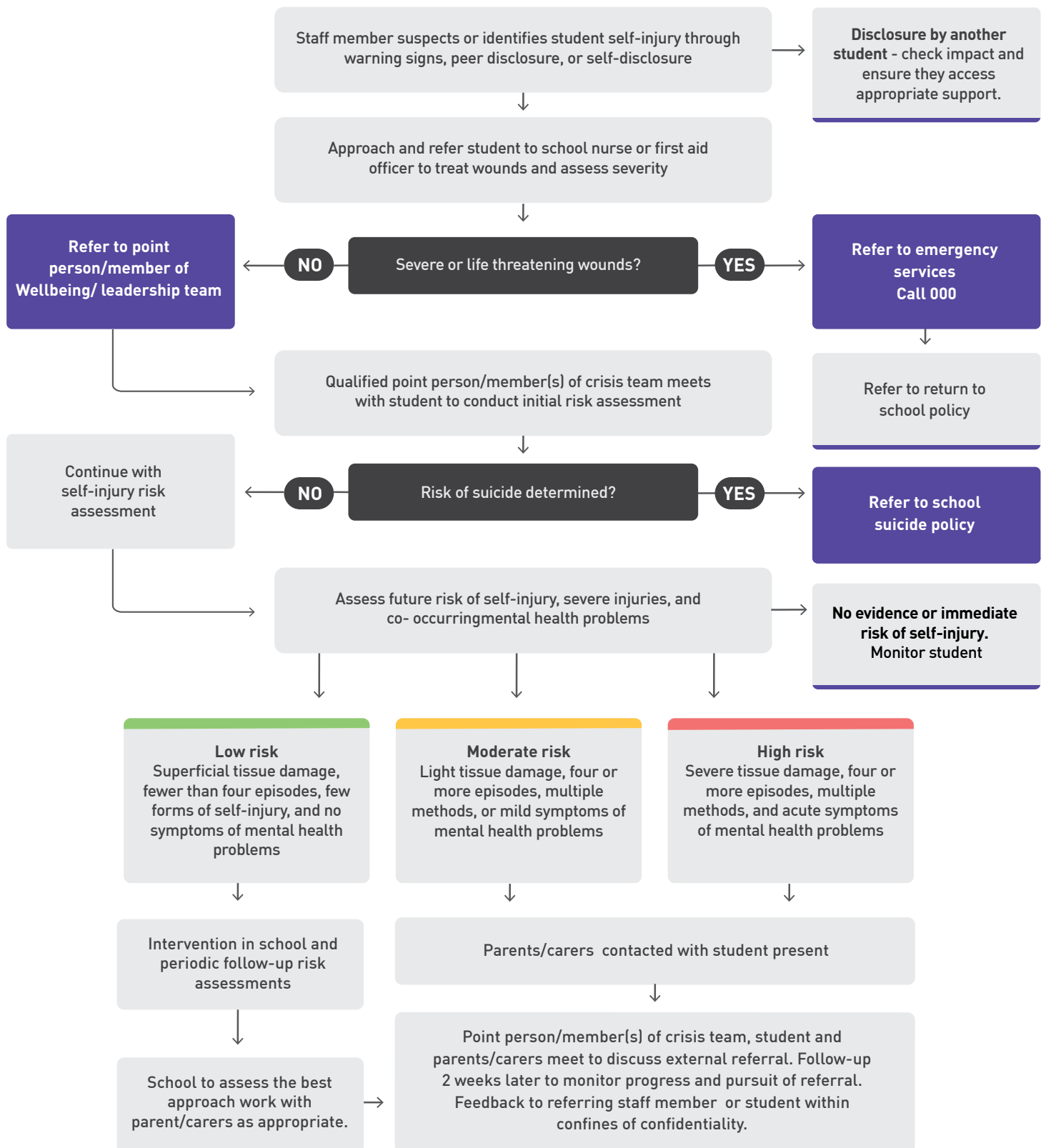


Responding to incidents of self-harm

All incidents of self-harm should be responded to quickly. Use this flowchart to guide staff responses to an incident at your school, or to develop your school's self-harm response procedures. It may be useful to display this flowchart in a prominent location in staff rooms.



Adapted with permission from Berger, E., Hasking, P., & Reupert, A. (2015). Developing a policy to address non-suicidal self-injury in schools. *Journal of School Health*, 85, 629-647.